

Plantation Pine Road





3445 NE 24th Street
 Ocala, Florida 34470
 (352) 387-1597
 CBC1258647
www.NShomes.us

Plantation Pine Road

Square Footage

Living: 4,626 Entry: 72
 Garage: 886 Lanai: 872

Total Under Roof: 6,456

House Features

- 4 Bedroom; 5 Bath; 3 Car Garage
- Coffered Ceilings
- Built in Cabinetry
- Optional Detached Guest Suite

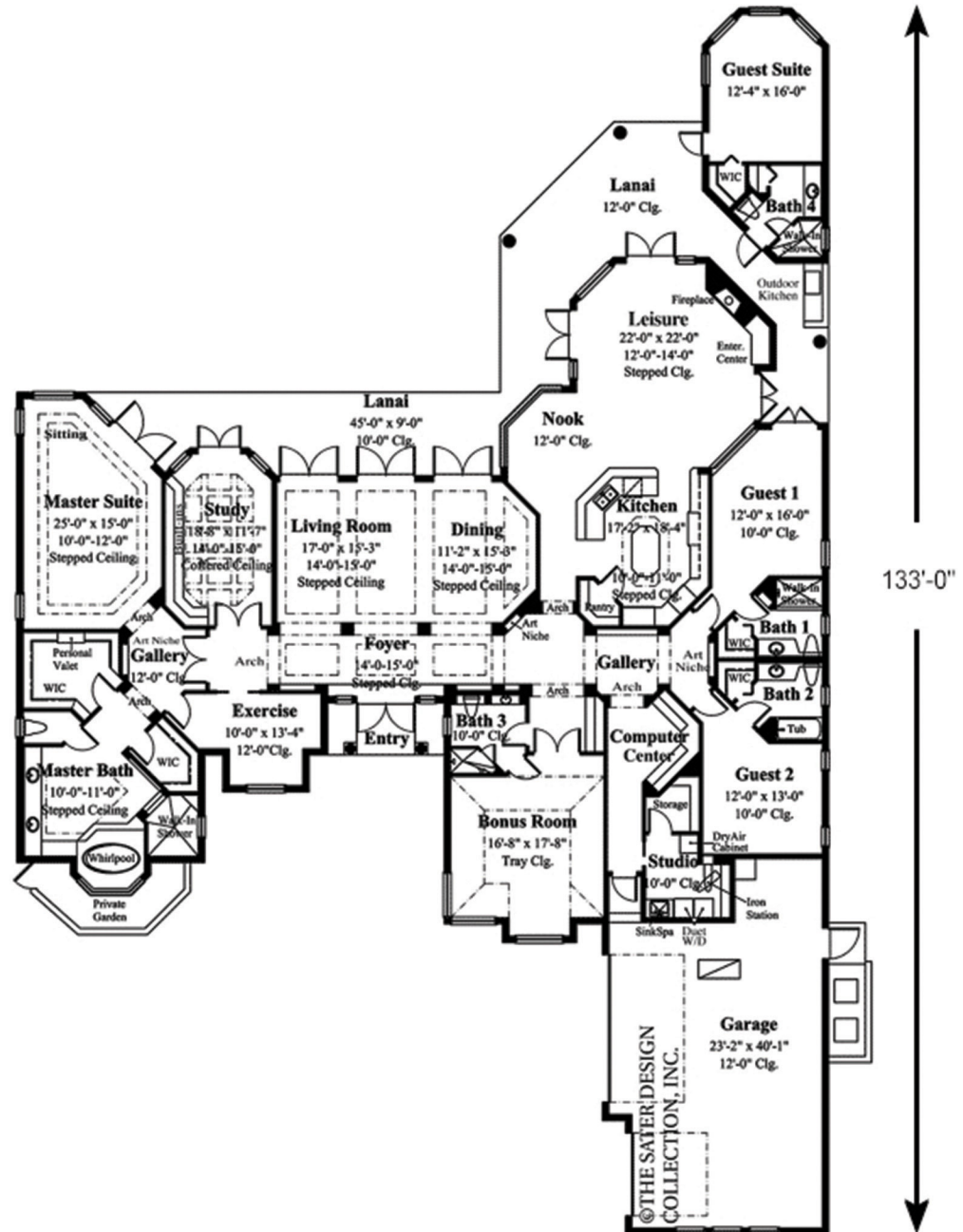
House Description

This home provides plenty of living space with an elegant exterior. It boasts 4,626 sq ft of living area and has four bedrooms and five bathrooms. It has a slab/stemwall foundation. Focused around the outdoors, the main living areas have windows or doors taking advantage of the natural surroundings. Off the master suite are the exercise room and study with a coffered ceiling and built-in cabinetry. A large relaxing leisure room has a fireplace, a built-in entertainment center and a stepped ceiling. The other wing of the house has a bonus room computer center and an optional detached guest suite off the leisure room.



Plantation Pine Road

← 88'-0" →



See construction specifications for additional information.