

The Applewood





3445 NE 24th Street
 Ocala, Florida 34470
 (352) 387-1597
 CBC1258647
www.NShomes.us

The Applewood

Square Footage

Living: 2,246 Country Porch: 263
 Garage: 625 Rear Lanai: 441
 Total Under Roof: 3,575

House Features

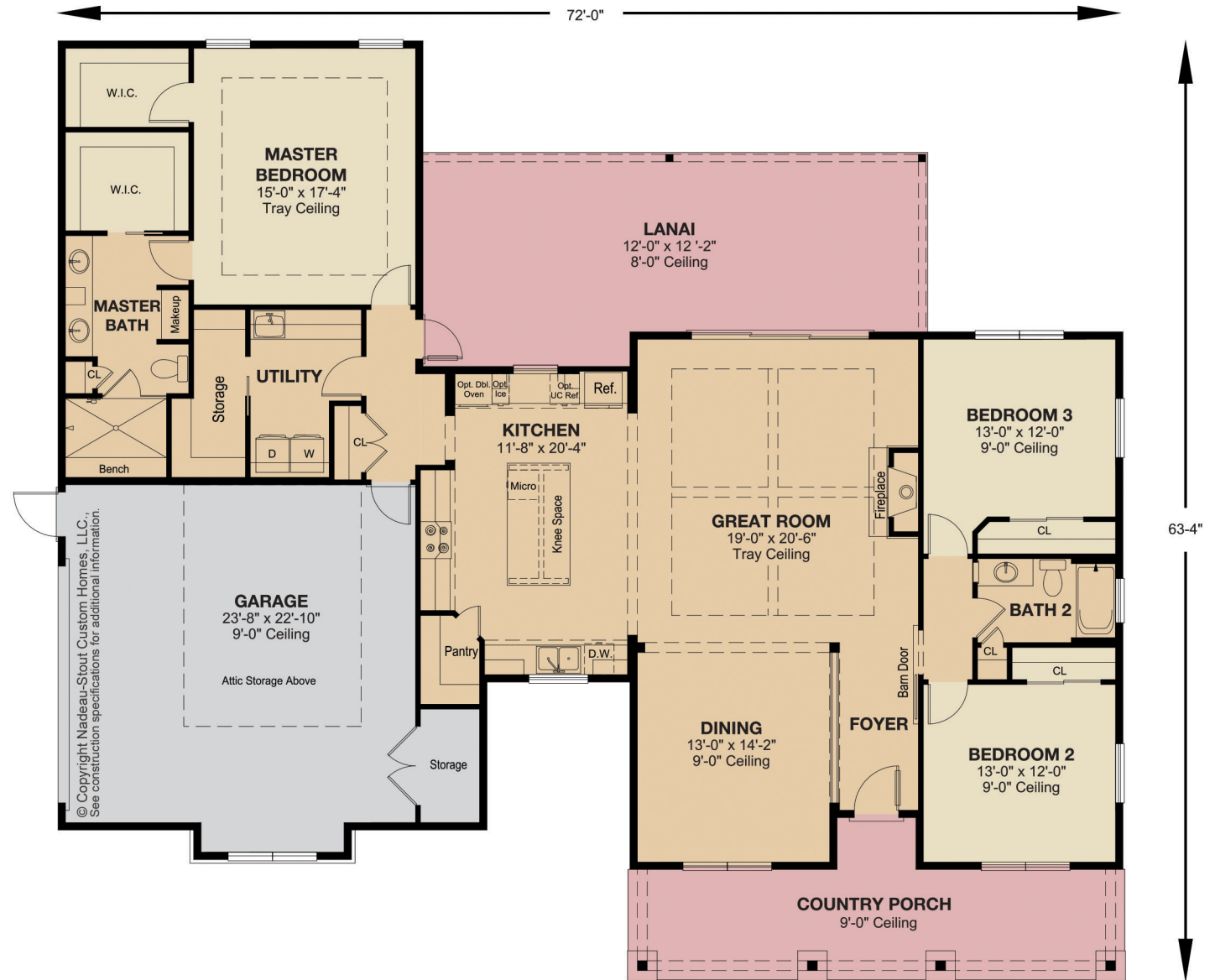
- Open Floor Plan
- Large Front Porch and Rear Lanai
- Huge Kitchen with Walk-In-Pantry
- Side Entry 2-car Garage with Storage Closet
- Large overflow storage closet in Utility
- 12' wide sliding glass door to Lanai
- Wood Burning Fireplace

House Description

This home offers refined living with a seamless blend of elegance and comfort. Designed with an open floor plan, the layout creates a natural flow between the main living spaces, perfect for both everyday living and entertaining.



The Applewood



© Copyright Nadeau-Stout Custom Homes, LLC.,
 See construction specifications for additional information.