

# The Aspen





3445 NE 24th Street  
 Ocala, Florida 34470  
 (352) 387-1597  
 CBC1258647  
[www.NShomes.us](http://www.NShomes.us)

## The Aspen

### Square Footage

Living: 1,736      Front Porch: 72  
 Garage: 484      Rear Porch: 174  
 Breezeway: 50  
 Total Under Roof: 2,516

### House Features

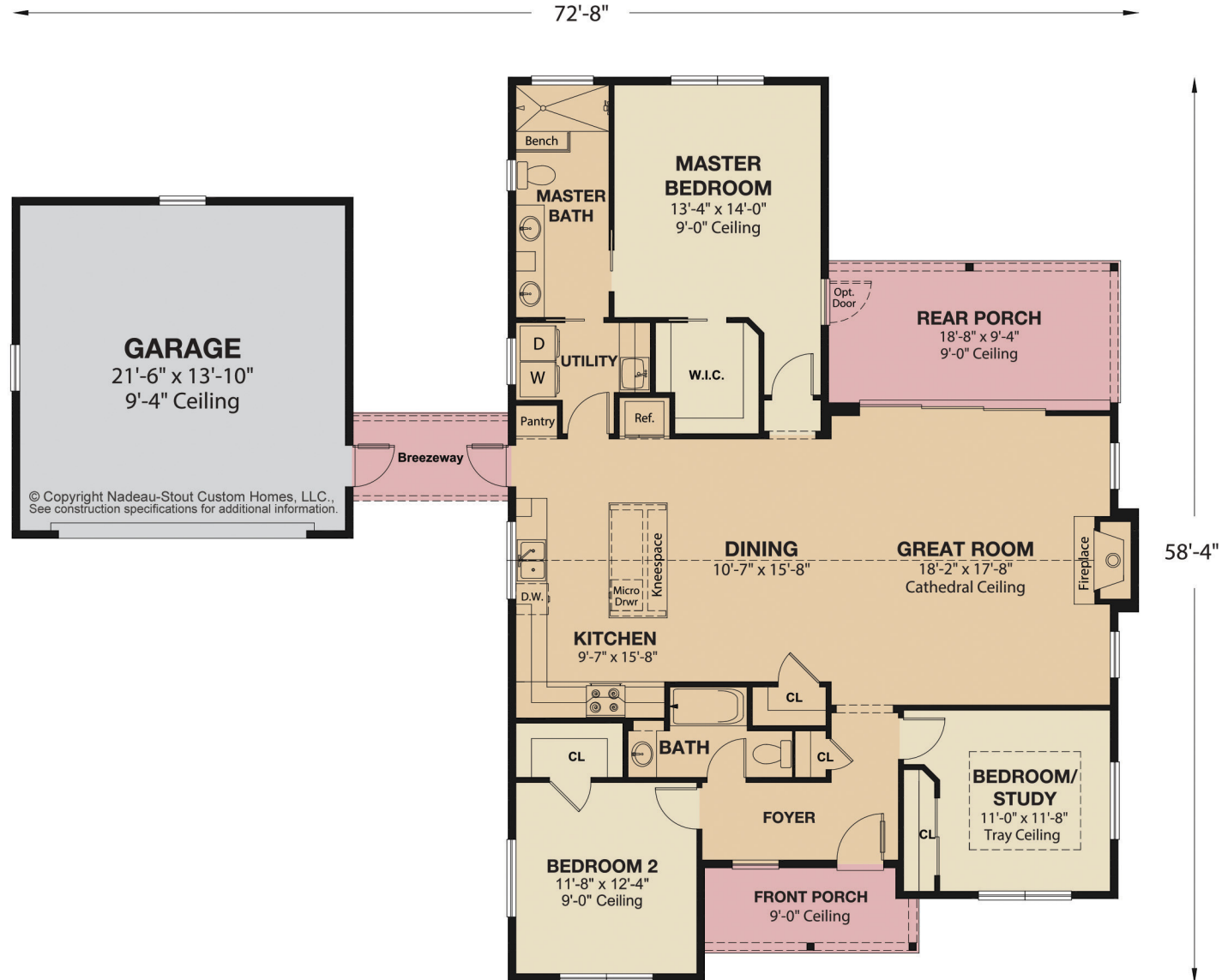
- Spacious Kitchen with Island Cabinet
- Cathedral Ceilings
- Detached Garage with Breezeway

### House Description

Without question, The Aspen offers more character than any other design of comparable size. The primary highlight of this three-bedroom, two-bath design is the open-style floor plan of the Great Room, Kitchen and Dining area. Within this space, a tall cathedral ceiling flanked with high windows at both ends of the room and a 12' wide pocket sliding glass door out to the rear lanai cascade copious amounts of natural light into this comfortable living area. Bedroom #3 also includes a tall "active" dormer that allows more natural light to blanket the room. This design has it all, including scalability as the breezeway and garage could be phased and built later if so desired. Need more garage? No problem, it's easy to stretch this one to a three or four car garage.



# The Aspen



© Copyright Nadeau-Stout Custom Homes, LLC.,  
 See construction specifications for additional information